





WELCOME

WHO WE ARE

Founded in 1996 in Limassol, Cyprus, Lemissoler developed from a regional Liner Shipping Company into an established Shipping Group operating globally. We provide marine transportation services of dry bulk commodities, with uncompromised obedience to our flagship Corporate Environmental Responsibility.

At Lemissoler our success is measured by our clients' success. We combine deep industry knowledge to our unique multi-disciplinary approach to provide our clients with ample reasons to keep coming back.

We are energized by our Vision of Trusted Navigation - Trusted Shipping and Purpose to Create Value, so we continuously adapt our strategy to the ever-changing environment of the maritime industry. We diversify our fleet operation on both the spot and period market and offer our core businesses of Ship Management, Commercial Management, Corporate Management and Research & Development always with an emphasis on Corporate Responsibilities, Innovation and Digitalization.





OUR STORY

1996 –
2010



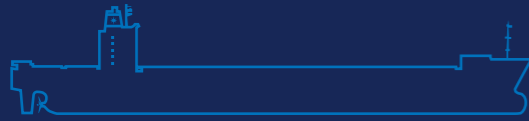
Acquisition of first container vessel and launching of feeder operations in the Baltic Sea.

2000 –
2019



Lemissoler enters paper carrier sector.

2008 –
2013



En-bloc acquisition of Panamax container vessels.

2010 –
2013



Fleet acquisition of Panamax and Capesize bulk carriers.

2011



En-bloc acquisition of Dolphin 57 Supramax bulk carriers.

2013



Initiation of fleet renewal series with our owned design of Lem 59 environmentally friendly newbuilding Supramax bulk carriers.

2017

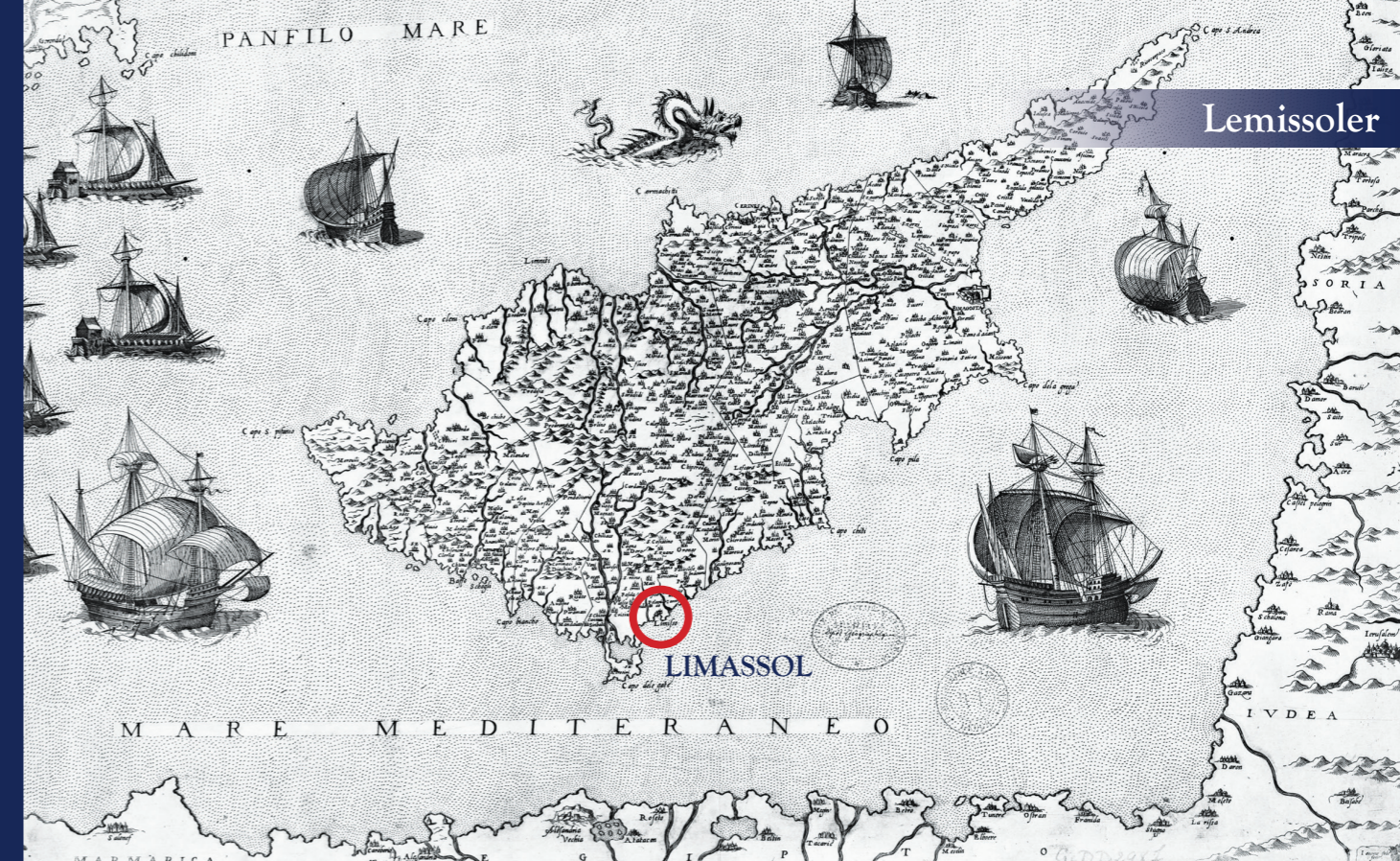


Addition of high specification owned design Lem 65 newbuilding Ultramax bulk carriers.

2019



Design process of New Panamax bulk carriers.



Lemissoler

Name origin of Lemissoler

There are many ways to describe the inhabitants of Limassol: Limassolian, Lemesieur, Lemesianos, Lemesios, Lemissoler. All these names, regardless in which language they are spoken, point to the same direction - to the inhabitant of the city of Limassol (Λεμεσός).

Lemissoler, as a worldwide Shipping Group decided to make use of a term which gives emphasis to the people more than just the place.



OUR WAY

The way we think, operate and act.

Our Vision

- Trusted Navigation
- Trusted Shipping

Our Mission

- Sail Safe
- Sail Green
- Sail Efficient

Our Values

- Transparency
- Integrity
- Excellence
- Respect



Ship Management



Commercial Management

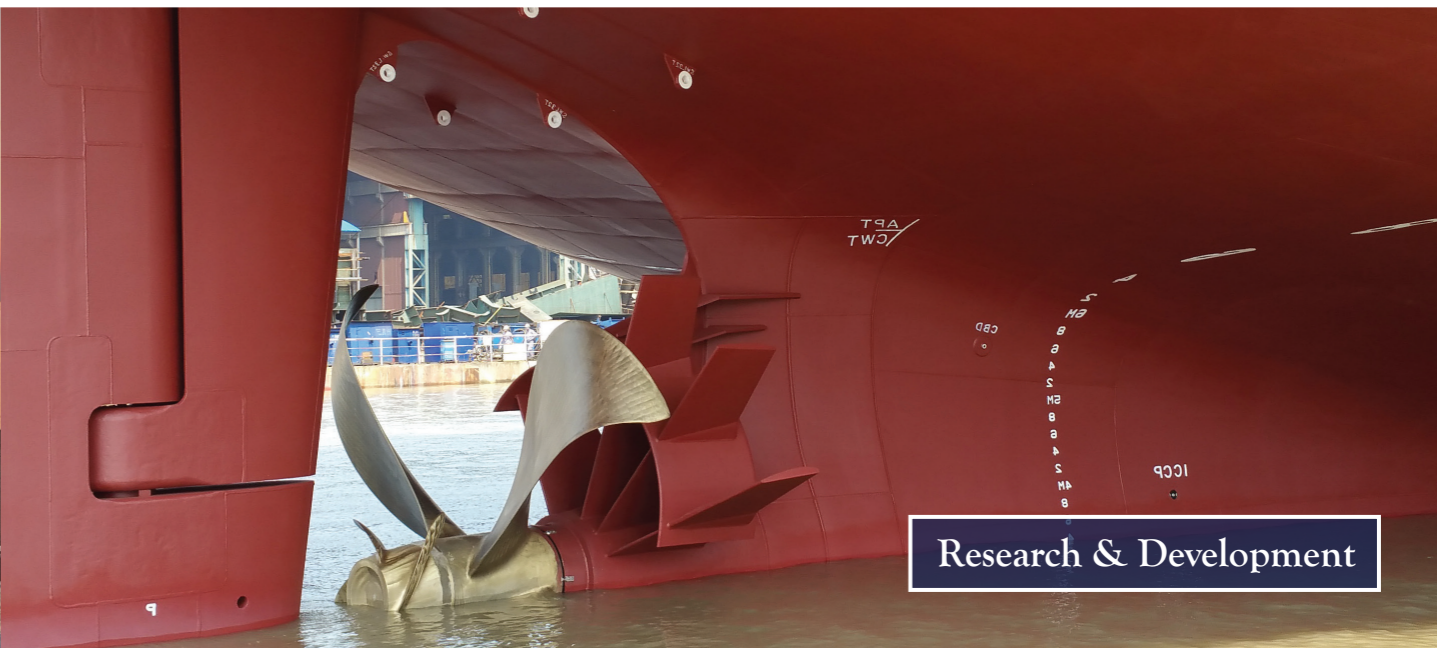


OUR BUSINESS

Corporate Management



Research & Development



SHIP MANAGEMENT

We work with our clients to build long-term relationships that achieve lasting competitive advantages.

Our Ship Management unit provides vital support and reassurance to shipowners with an extensive range of services.

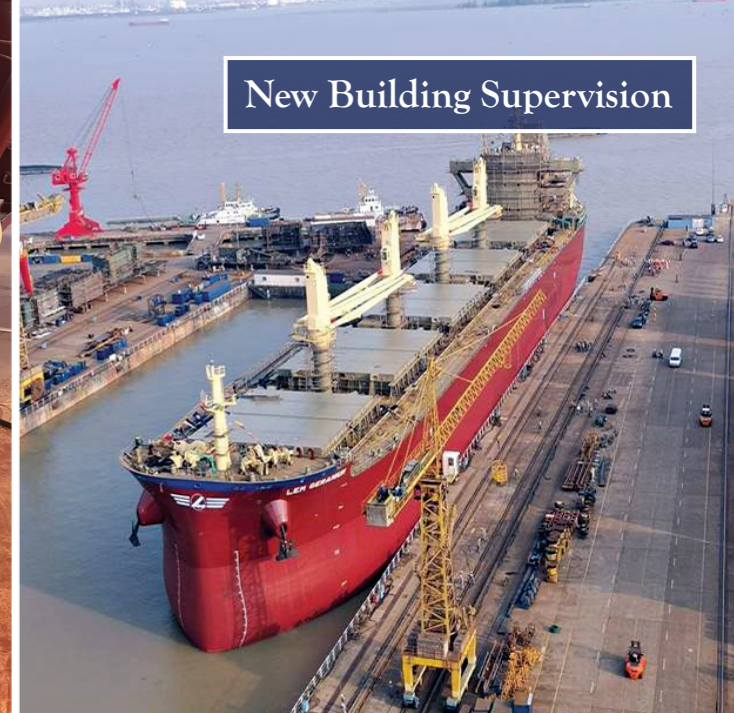
Our services include:

- Technical Management
- Crew Management & Training
- New Building Supervision
- Purchasing and Procurement

In each of these services, that are fully aligned with clients' organizational values and commercial objectives, we offer partnership-focused services that enable clients to maximize quality, cost-efficiency, profitability and control wherever in the world they are located.



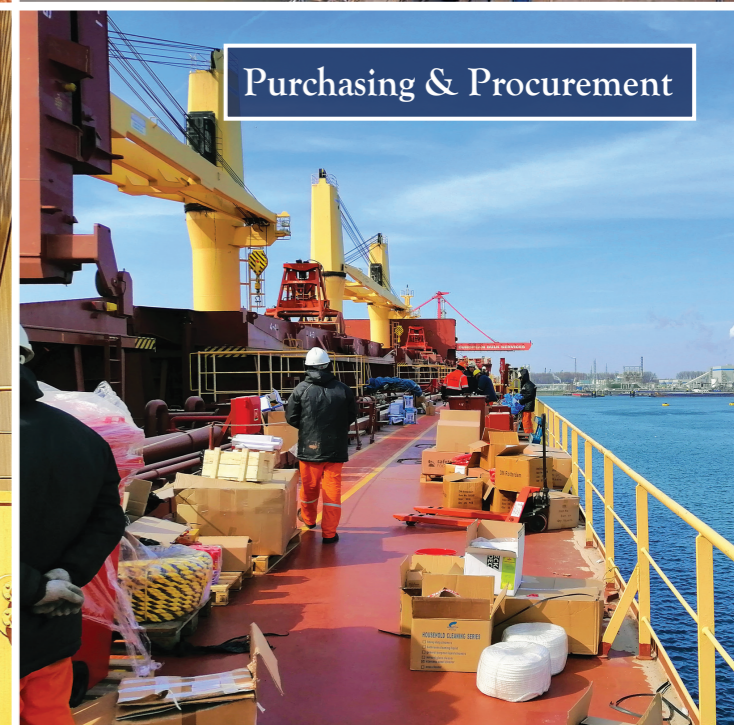
Technical Management



New Building Supervision



Crew Management & Training



Purchasing & Procurement

COMMERCIAL MANAGEMENT

Our Commercial Management unit is focused on analyzing and understanding how the shipping markets work. By translating our industry knowledge into strategic vessel employment, we've built a stand-out record of financial returns for all vessels under our operation.

The desk comprises of shipping professionals with long-term service and proven results of outperforming the market by efficiently reducing cost and maximizing revenue.

Our services include:

- Commercial Operations
- Chartering
- Post Fixture
- Sale & Purchase
- Cargo Operations
- Performance Monitoring
- Comprehensive Reporting

Get in touch to find out how we can develop tailor-made solutions for your business needs and be your trusted partner in every voyage.



Commercial Operations



Chartering



Post Fixture

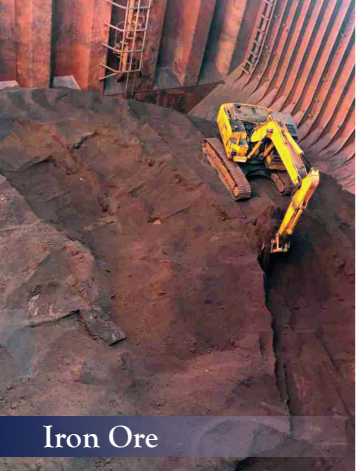


Sale & Purchase

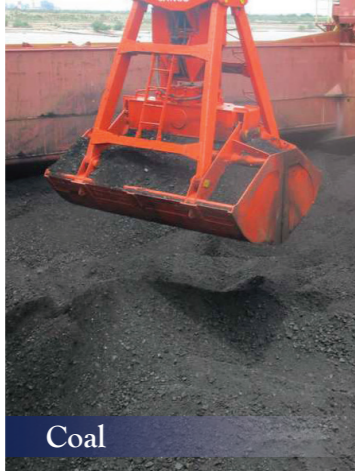


Cargo Operations





Iron Ore



Coal



Grains



Concentrates



Bagged Rice



Bauxite



Steel Coils

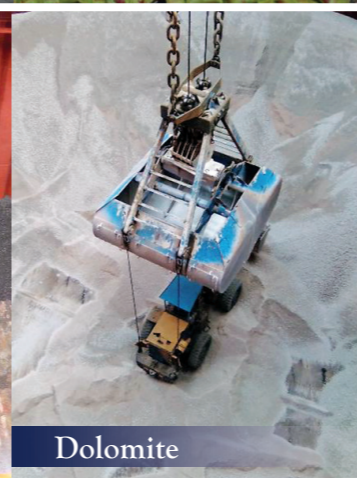


Sugar

MAIN CARGOES WE CARRY



Precious Metals



Dolomite



Pyroxenite



Corn



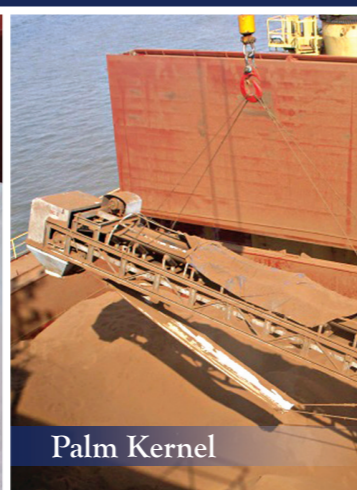
Manganese Ore



Fertilizers



Salt



Palm Kernel



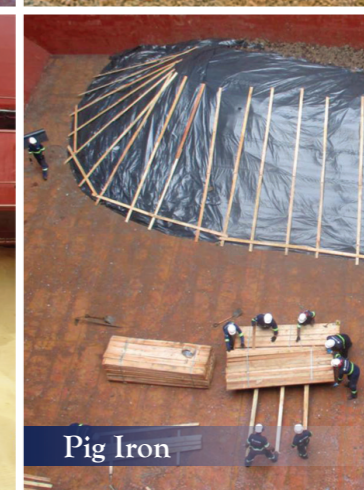
Cement



Muriate of Potash



Soya Beans



Pig Iron



Steel Pipes

CORPORATE MANAGEMENT

Our Corporate Management unit provides an array of support services structured to cater for both our internal and external clientele.

The unit specializes in originating, developing, structuring, executing and managing investment vehicles. Our structures allow investors to participate in transparent and professionally managed portfolios within the shipping industry in accordance to a defined investment strategy.

Our services include:

- Private Equity Management
- Fund Administration
- Corporate Governance
- Organization & Methods
- Corporate Reporting
- Finance & Treasury Management
- Corporate & Legal Administration Services
- Full Financial Reporting
- Risk Management
- Advisory & Consultancy
- Information Technology

All the services offered are aligned with our clients' organizational values and commercial objectives. We offer partnership-focused services that enable clients to maximize quality, cost-efficiency, profitability and control.

Private Equity Management

Corporate & Legal

Fund Administration

Advisory & Consultancy

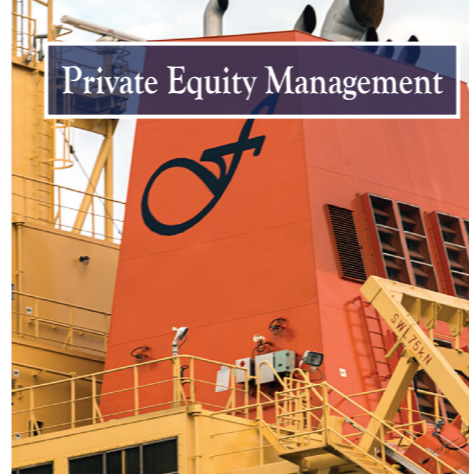
Risk Management

Finance & Treasury

Corporate Governance

Corporate Reporting

Information Technology



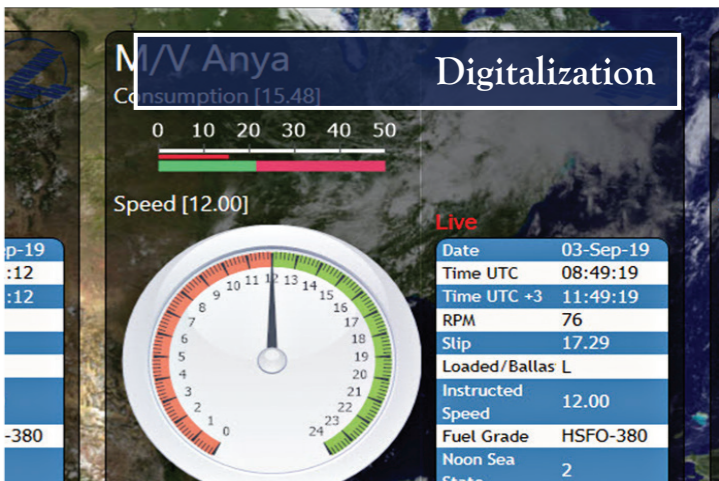
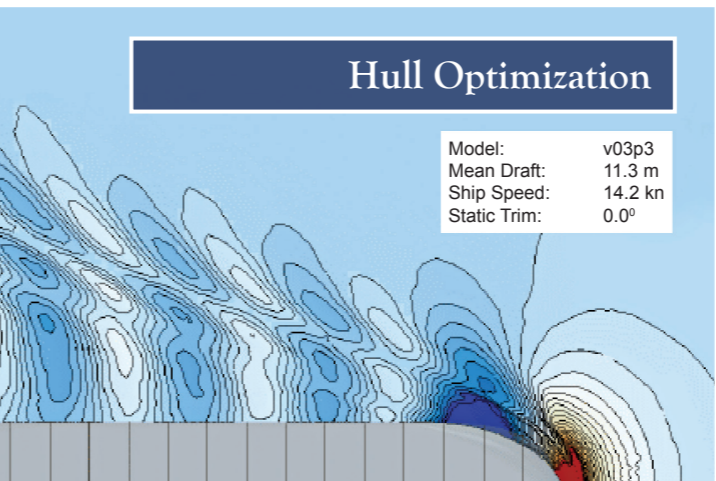
RESEARCH & DEVELOPMENT

A goal without a plan is just a wish.
Lemissoler aims for greener shipping - one step at a time.

We invest our expertise, time and capital to develop a greener fleet and constantly improve the efficiency of our operations.

The Group challenges the norm, systems and standards and focuses on delivering solutions and assets that are great for the environment as well as for our clients.

If you share our passion, we would like to hear from you.





OUR COMMITMENT

Since our formation, it has been our intrinsic motivation that helped us build our habits, unearth our core values and shape the identity of our Group.

We have always remained committed to maintaining a principles-centric culture and our promise to clients is that we will continue to make value-based choices while offering tailor-made and cost-effective solutions.

In the end, it all comes down to whom you place your trust in.

Philippos Philis
Chairman and CEO





Get in touch



LEMISSOLER

LEMISSOLER NAVIGATION CO. LTD

HQ address: 17-21b Ayias Zonis Str., Eleni Court
CY3027 Limassol, Cyprus

Tel: +357 25818830

Email: info@lemissoler.com

Web: www.lemissoler.com

SAIL

safe
green
efficient